

Model  
**CATCH SMP**

Description  
**Signal Multiply**

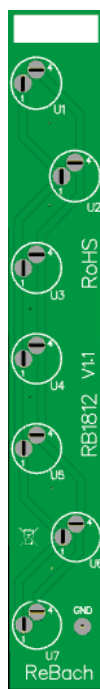
**Installation:**

- Switch off the power supply before installing the module
- Only install the module in a compatible Eurorack housing with a compatible power supply

- Secure the module in the rack using the supplied screws (Tighten screws hand tightly)
- Switch the rack back on again and connect the module to the desired other modules

**Specification:**

- Power: na
- Current: na
- HP4 (W20.20mm H128.5mm ) Depth 26mm



Do not use the device in places: exposed to extreme temperatures or direct sunlight; near a heating; use in rain; wet room such as bathrooms or on wet floors; vapor or smoke.  
Protect children so that they can not be injured. Keep packaging material away from children. Switch off the unit if it reacts strangely (please contact your ReBach dealer for further information). Do not repair the device yourself. Only use the device with compatible peripherals.

No rights can be deducted from this document. Specified specifications may differ from the actual product.